



DECEMBER 2022

Newsletter

Your source for important Pre-SOMA updates!

CONTENT

- 2023 National Pre-SOMA Research Symposium
- Cultural competency - Hijab in Medicine with Simal Ali on December 12
- Events to look forward to in 2023

Happy Holidays

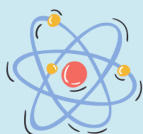


*From our Pre-SOMA family to yours,
we would like to wish you all a very
Happy Holidays! With the year
coming to an end, we wish everyone
a very Happy New Year!*

PRE-SOMA
STUDENT OSTEOPATHIC MEDICAL ASSOCIATION



***Interested in
presenting your
research?***



NATIONAL PRE-SOMA RESEARCH SYMPOSIUM

WHAT IS SOMA

STUDENT OSTEOPATHIC MEDICAL ASSOCIATION. WITHIN SOMA, THE RESEARCH COMMITTEE IS TASKED WITH FOSTERING AN ENVIRONMENT OF RESEARCH AND SCHOLARSHIP AMONG SOMA MEMBERS

WHO CAN APPLY?

ANY CURRENT UNDERGRADUATE STUDENT WHO IS A PRE-SOMA MEMBER. NOT A MEMBER? TALK TO YOUR SCHOOL'S CHAPTER TO JOIN!

WINNERS

THE WINNERS WILL BE NATIONALLY RECOGNIZED BY SOMA AND WILL RECEIVE MONETARY PRIZES

CALL FOR ABSTRACTS

NOVEMBER 21, 2022

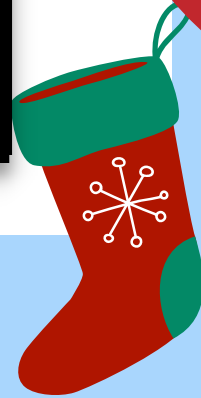
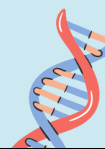
ABSTRACT DEADLINE

DECEMBER 9, 2022

VIRTUAL PRESENTATION

JANUARY 2023 VIA ZOOM

TO APPLY YOU MUST: SUBMIT AN ABSTRACT (250 WORD MAXIMUM). IF ACCEPTED, YOU WILL BE INVITED TO PREPARE A POSTER AND A SHORT ORAL PRESENTATION





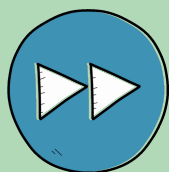
Cultural competency

Hijab in Medicine with Simal Ali on

December 12, 2022



Second LT Simal Ali is a 3rd-year medical student from the Touro College of Osteopathic Medicine in Middletown, NY. Simal grew up in Philadelphia where she also completed her undergraduate studies in Biological Sciences at Drexel University and her clinical research co-ops in obesity and neurosurgery at Penn Medicine. Ali first began wearing her hijab in 2011 and since then has been inspired to help demystify the misunderstandings many people have about the Islamic faith and Muslims in general. In every space, she is in she welcomes questions and discussion about the topic and on Dec. 12th she will be presenting on a subject that every specialty of medicine could benefit from which is clinical considerations when caring for a Muslim patient. Ali's perspective as both a hijab wearing Muslim woman in healthcare and knowledge of the faith will offer unique insight necessary for optimizing patient-centered care.



EVENTS TO LOOK

FORWARD TO:

INTRODUCING - OMM/OPP FRIDAYS

Starting next year, every first Friday of the month we will post OMM/OPP demonstration videos on our social media accounts!

SPRING CONVENTION & PRE-SOMA EXCLUSIVE BOOTCAMP

Dates and details will be available soon. Stay tuned!



The SOMA Shop



OFFICIAL ONLINE STORE
THESOMASHOP.COM

Interested in Pre-SOMA swag?
Check out the official SOMA shop for
osteopathic swag that you can rock!

[Click here!](#)



*"The doctor of the future will
give no medicine, but will
interest his patient in the
care of the human frame, in
diet and in the cause and
prevention of disease"*

– Thomas Edison



Bailey Borycki

Senior Pre-SOMA Director
WVSOM, OMS IV

presomadirector2@studentdo.org



Makayla Bussman

Junior Pre-SOMA Director
ICOM, OMS III

presomadirector1@studentdo.org

