

NEWSLETTER

Your Source for Quick, Important Pre-SOMA News



WHERE STUDENTS WHO WANT TO ADD D.O. TO THEIR LAST NAMES GO

Become a member for FREE at <https://studentdo.org/pre-soma/pre-soma-membership/>

TABLE OF CONTENTS

AACOMAS APPLICATION

END OF YEAR CHAPTERS REPORT

D.O. SCHOOLS LISTED AS BEST MEDICAL SCHOOLS

MED SCHOOL APPLICATION SUGGESTIONS

AACOMAS APPLICATION 2022-23 SCHOOL YEAR

Are you ready to apply to medical school?

The AACOMAS opened its application portal on *May 4, 2022*. We strongly recommend to start working on your application right away as the schools start reviewing applications in June 15, 2022. The earlier you apply, the higher are the probabilities of you getting the opportunity of an interview.

There are multiple sections you can complete while waiting for your MCAT score or letters of recommendation. We suggest you communicate with your prospects recommenders before you send the official request from the AACOMAS application portal. If you have any questions or are in need of assistance, contact AACOMAS at:

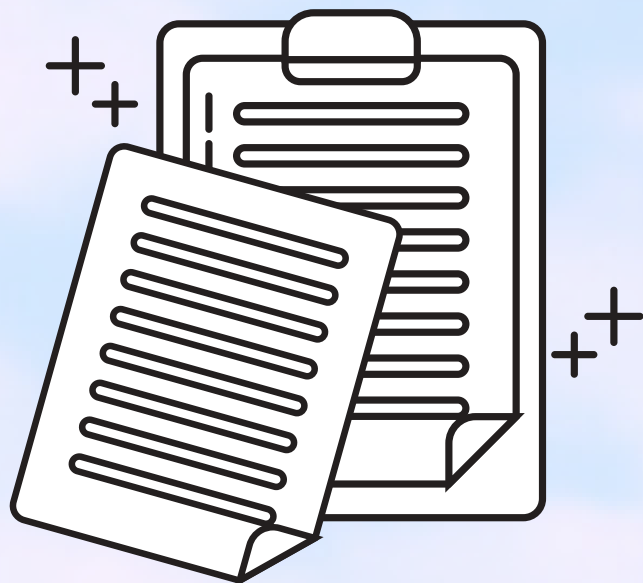
Phone: 617 - 612 - 2889

Email: aacomasinfo@liaisoncas.com

Monday - Friday (9 AM - 5 PM EST)

END OF SEMESTER CHAPTERS REPORT

Deadline: June 15, 2022



An email was sent in May 10, 2022 with a link for the report. If you are the president of a chapter and you did not get this email, please reach out to the Pre-SOMA Directors at:

presoma@studentdo.org

It is imperative that every chapter completes this report to be considered a nationally active chapter. If your chapter received recognition during the period of March through May, it is not necessary for your chapter to complete the report.

D.O. SCHOOLS LISTED AS BEST MEDICAL SCHOOLS

The osteopathic profession is one of the fastest growing career in the United States. The field continues making a difference in the world of medicine by preparing student doctors to become whole-hearted physicians. *The D.O.* reported a list of osteopathic schools within the best 100 top-rated medical schools in Unites States. The list is focused on schools who specialize on Primary Care and participation of its graduates in rural and undeserved areas. Here are some of the schools listed:

Top Med Schools For Primary Care

#36: TCOM
#78 (tie): KYCOM
#78 (tie): OUH-COM
#88: LECOM
#90: WCUCOM

Med Schools with Most Grads Practicing in Primary Care

#1: DMU-COM
#2: KYCOM
#3: COMP
#4: WCUCOM
#5: ATSU-KCOM
#6: PNWU-COM
#7: MUC-COM
#9: VCOM
#11: TCOM

Med School with Most Grads Practicing in Rural Areas

#1: WCUCOM
#2: KYCOM
#5: OSU-COM
#6: ATSU-KCOM
#7: DMU-COM
#10: PNWU-COM
#14: WVSOM
#15: DCOM
#16: RVUCOM

Med School with Most Grads Practicing in Undeserved Areas

#4: WCUCOM
#5: PNWU-COM
#7: OSU-COM
#14: DCOM
#23: KCU-COM
#24: ATSU-KCOM
#25: MSU-COM
#27: AZCOM
#37: NSU-COM

[Click here to read the full report!](#)



MED SCHOOL APPLICATION SUGGESTIONS

We understand that applying for medical school can be stressful. In the midst of getting all that is needed to submit your application, it is hard sometimes to see the big picture and how to project yourself in paper can be difficult as well. Here we have some suggestions from current medical school students:

Be authentic in your interviews! Find something you can talk about to "WOW" them.

Apply early and be yourself during the interview. You are amazing, so show them!

Have multiple people look over your personal statement.

Make sure you consider each school requirements before applying.

RESOURCES



The SOMA Shop

Interested in Pre-SOMA swag?
Check out the official SOMA shop for osteopathic swag that you can rock!
[Click here!](#)

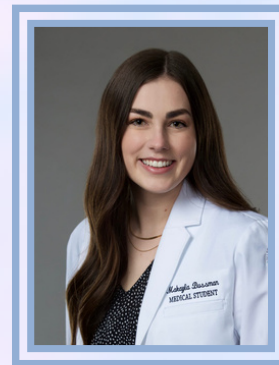


Pre-SOMA Mentorship Program

Interested in our Mentorship program?
Please sign up here:
<https://studentdo.org/pre-soma/pre-soma-mentorship-program/>



Bailey Borycki, OMS III
Senior Pre-SOMA Director
presomadirector1@studentdo.org



Makayla Bussman, OMS II
Junior Pre-SOMA Director
presomadirector2@studentdo.org

"There are no secrets to success. It is the result of preparation, hard work, and learning from failure." - **Colin Powell**