

NEWSLETTER

Your Source for Quick, Important Pre-SOMA News

Follow us on social media! @pre.soma 



WHERE STUDENTS WHO WANT TO ADD D.O. TO THEIR LAST NAMES GO

Become a member for FREE at <https://studentdo.org/pre-soma/pre-soma-membership/>

TABLE OF CONTENTS

PRE-SOMA MENTORSHIP PROGRAM

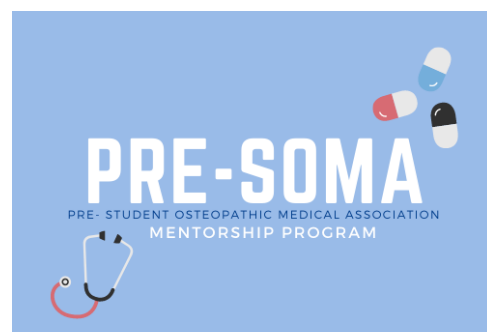
PRE-SOMA CHAPTER DRIVE

GEICO DEALS

UPCOMING EVENTS

Pre-SOMA Mentorship Program

The Pre-SOMA Mentorship Program has been created to connect Pre-SOMA members with SOMA members. One of our goals is to provide pre-medical students with someone they can reach out to who can offer first-hand advice and feedback about a variety of topics, including: MCAT, Pre-Medical Curriculum, Personal Statement, Curriculum Vitae, Interview Tips, The Application Process, School-Life Balance, Leadership, Medical School. [The first round of pairings have been made!](#) [Your mentors will be emailing you in the next week, If you don't hear from them, email us at \[presoma@studentdo.org\]\(mailto:presoma@studentdo.org\) and we will give you your mentor's contact information.](#)



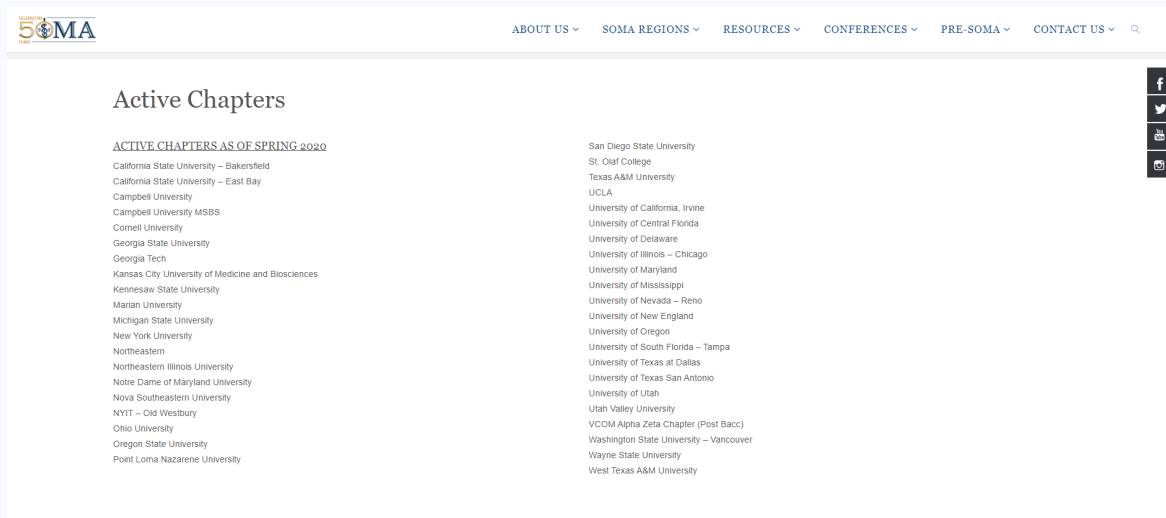
Pre-SOMA Chapter Drive

We currently have **42 Nationally Active Pre-SOMA chapters** across the country!

See all Active Chapters here:

<https://studentdo.org/pre-soma/active-chapters/>

Don't see your school's chapter? Email us at presoma@studentdo.org and we will help you accomplish this!

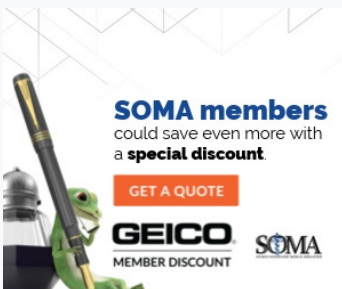


GEICO Partnership with Pre-SOMA

Pre-SOMA members could save with a special member discount with GEICO!

Get a Quote today by copy/pasting this link onto your browser:

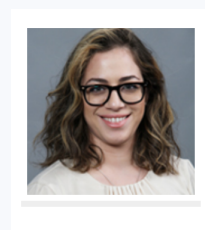
<https://tinyurl.com/y5ro6yy8>



Upcoming Events

Be on the lookout in your emails in the next newsletter for the following events:

- virtual presentation with AACOM
- mentorship virtual event
- National Virtual ShaDO Week
- Spring Convention reveal!



Amanda Buzzetta, OMS-III
National Pre-SOMA Director
presomadirector1@studentdo.org

“Life is choices, and they are relentless. No sooner have you made one choice than another is upon you.” - Atul Gawande